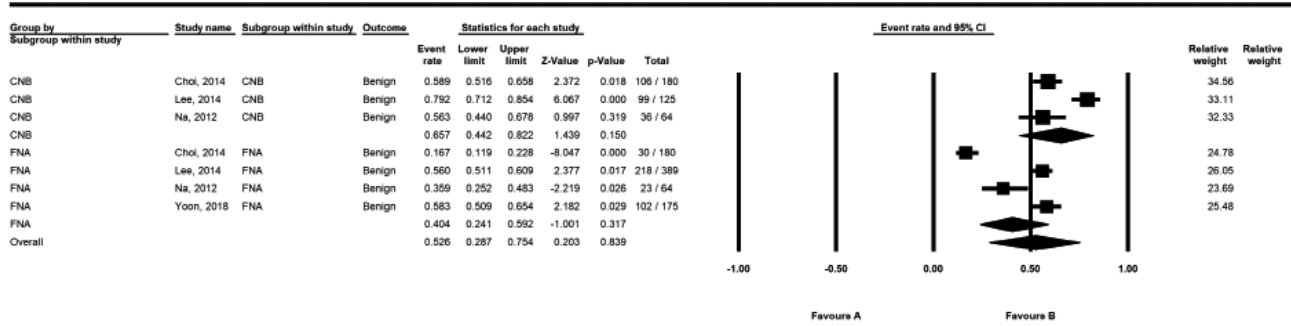
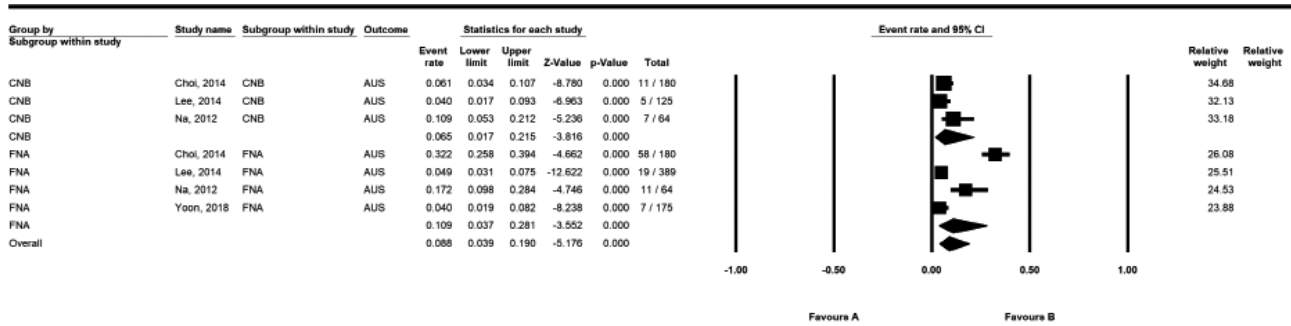


Benign result ($P=0.405$)



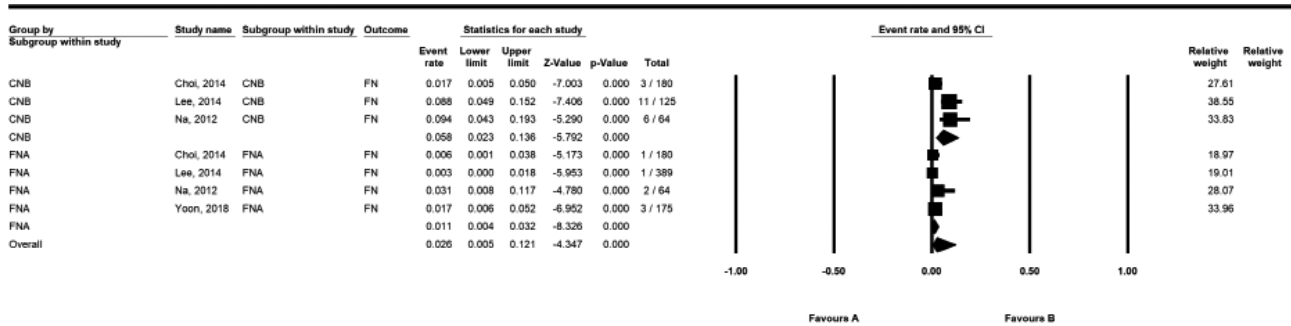
A

AUS/FLUS ($P=1.000$)



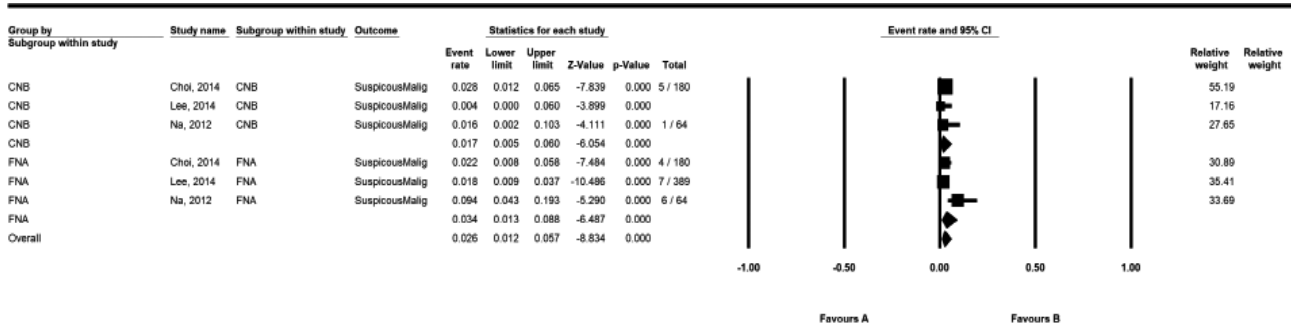
B

FN/SFN ($P=0.105, 0.021 \times 5$)



C

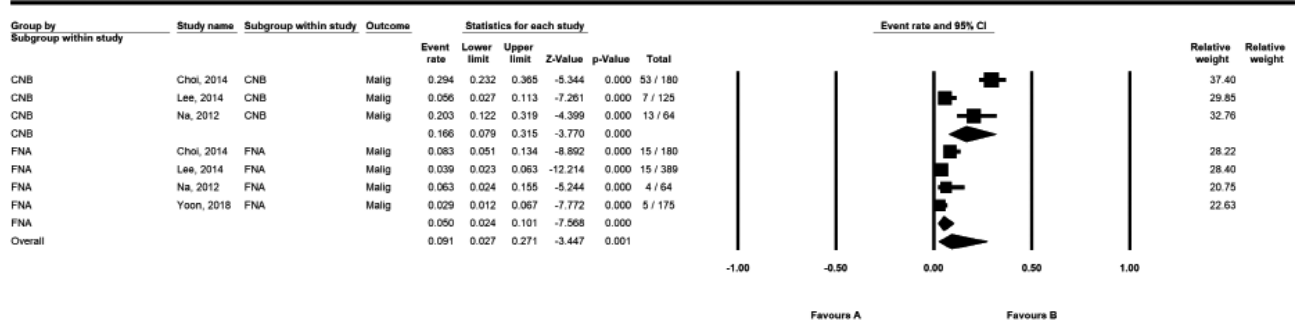
Suspicious for malignancy ($P=1.000$)



D

Supplementary Fig. 1. Forest plot of proportional meta-analysis in initially non-diagnostic nodules. (A) Benign. (B) Atypia of undetermined significance/follicular lesion of undetermined significance (AUS/FLUS). (C) Follicular neoplasm/suspicious for follicular neoplasm (FN/SFN). (D) Suspicious for malignancy. (Continued to the next page)

Malignant ($P=0.110, 0.022 \times 5$)



E

Supplementary Fig. 1. (Continued) (E) Malignant. CI, confidence interval.