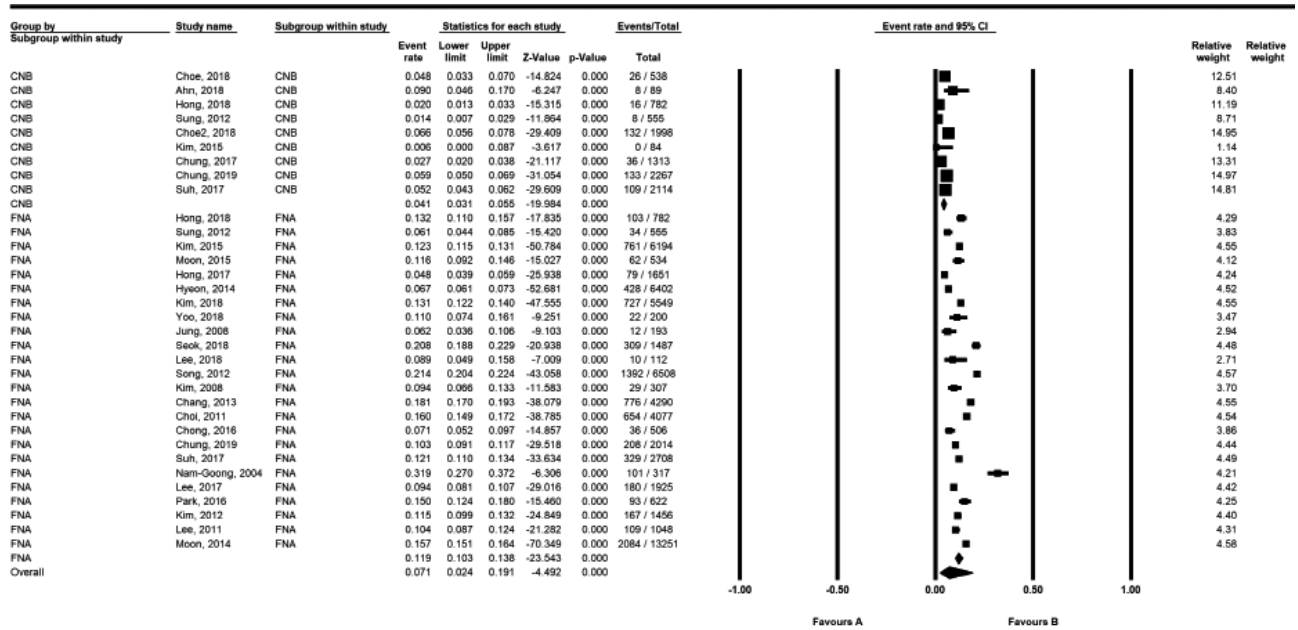
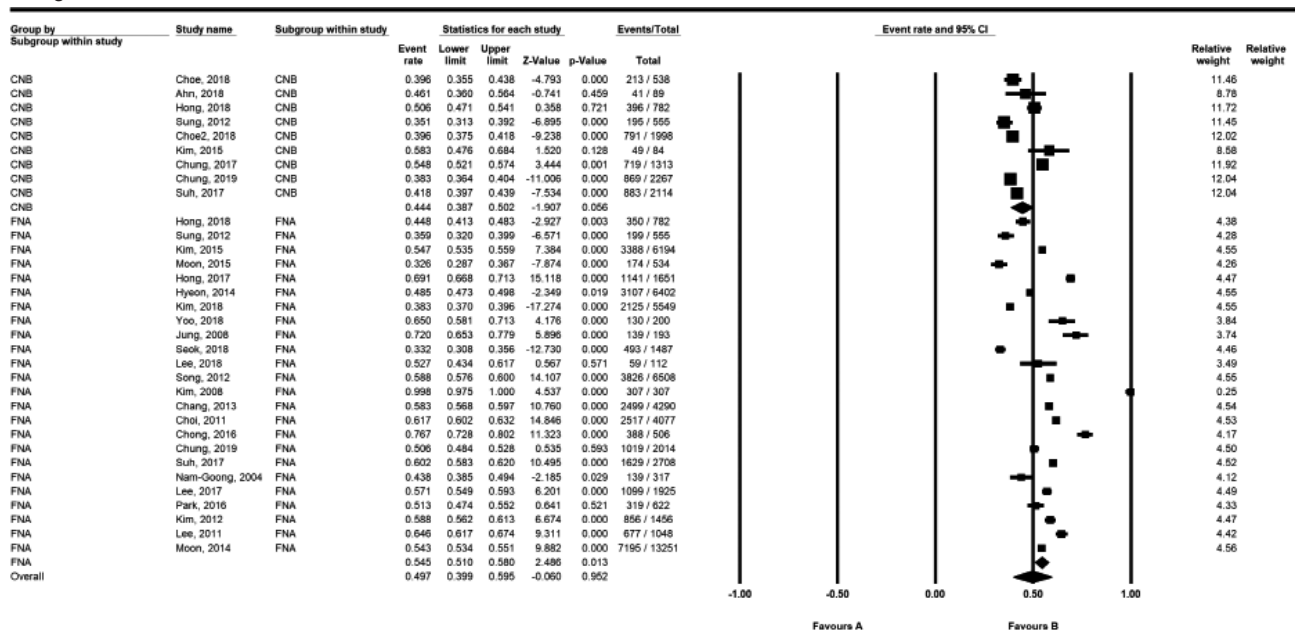


Non-diagnostic results

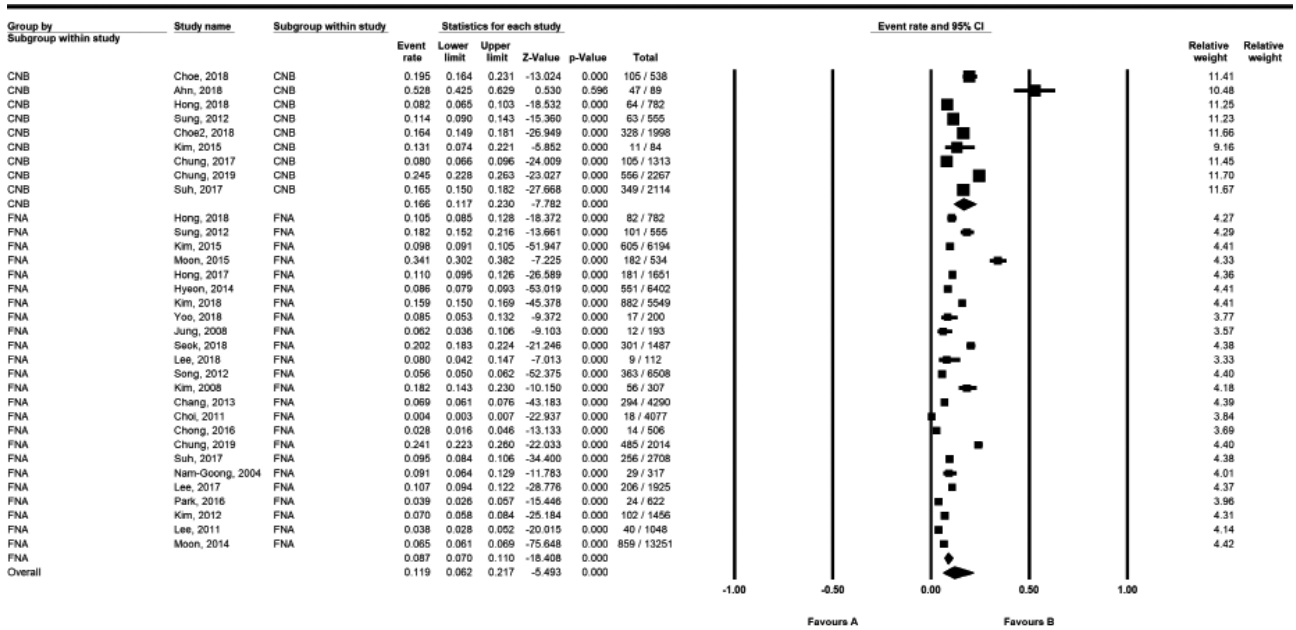


Benign results

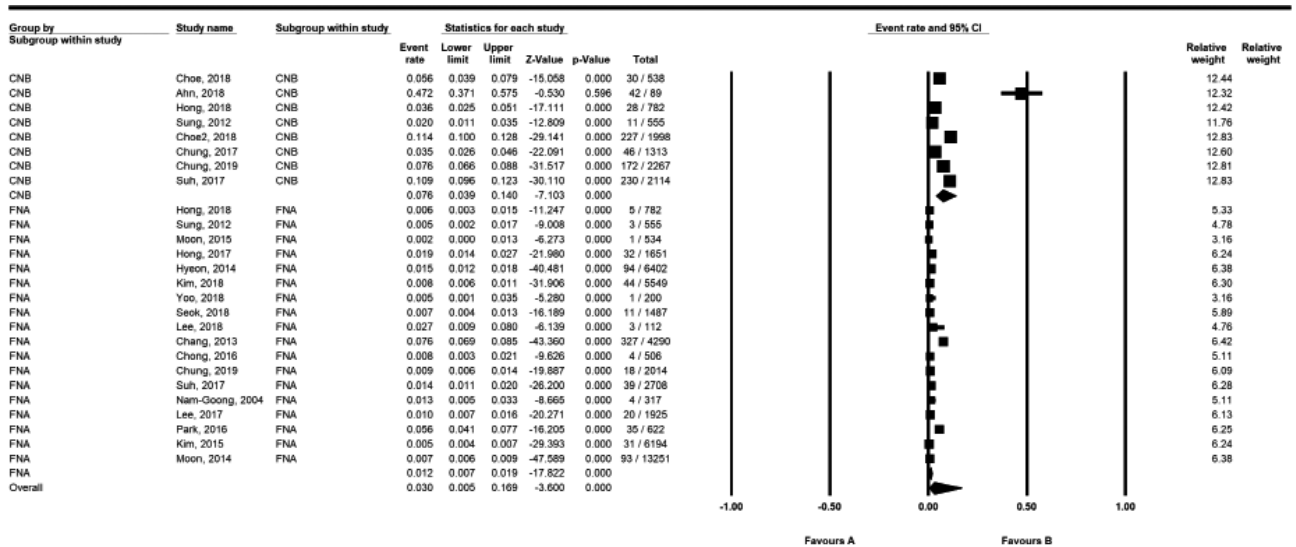


Supplementary Fig. 4. Forest plot for proportional analysis of rate for the diagnosis according to the Bethesda system between fine-needle aspiration (FNA) versus core needle biopsy (CNB). (A) Non-diagnostic results. (B) Benign results. (Continued to the next page)

AUS/FLUS results

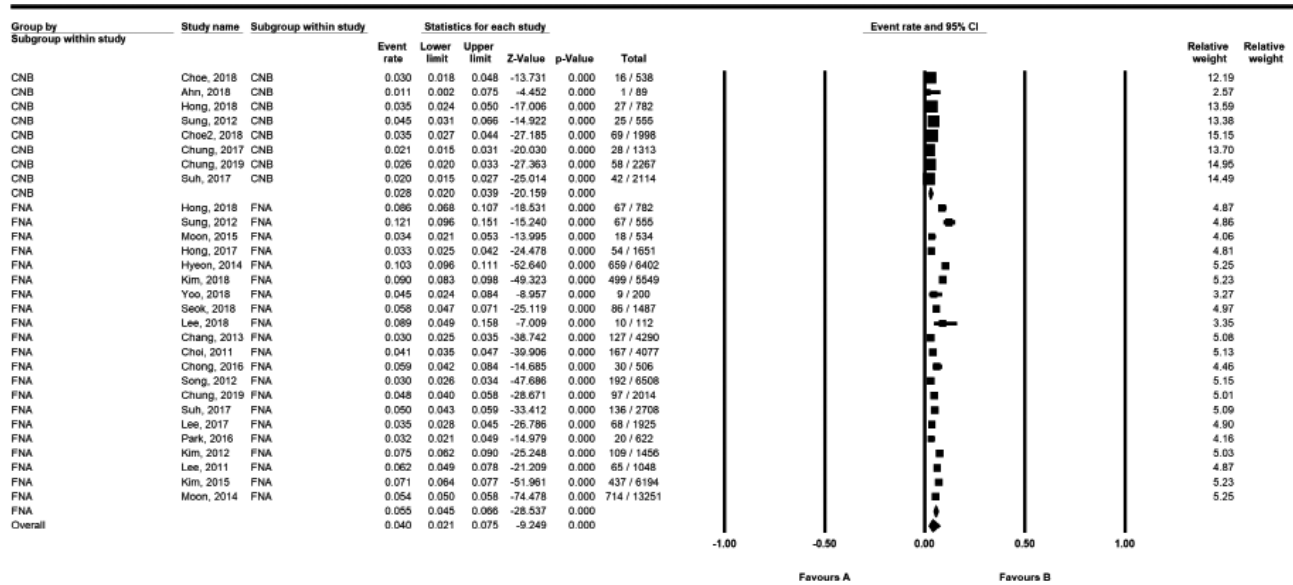


FN/SFN results

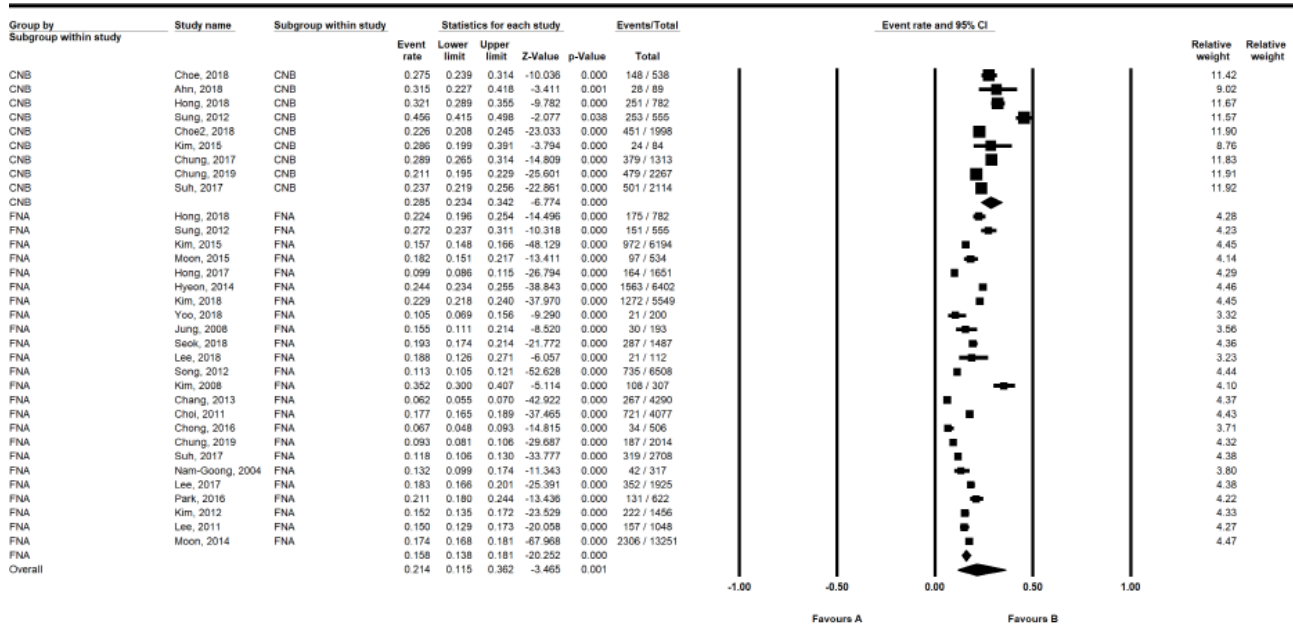


Supplementary Fig. 4. (Continued) (C) Atypia of undetermined significance/follicular lesion of undetermined significance (AUS/FLUS) results. (D) Follicular neoplasm/suspicious for follicular neoplasm (FN/SFN) results.

Suspicious for malignancy



Malignancy



Supplementary Fig. 4. (Continued) (E) Suspicious for malignancy. (F) Malignancy. CI, confidence interval.